

*WITH A FORWARD CURRENT OF 20mA

ALL THE RAW MATERIALS MEET RoHS STANDARD

ELECTRICAL SPECIFICATIONS @25° C:

- 1.0 TURN RATIO: (P2~P3) : (J1~J2) : 1:1 ± 3%
(P4~P5) : (J3~J6) : 1:1 ± 3%
- 2.0 INDUCTANCE: (P2~P3) AND (P4~P5) : 350uH MIN @0.1V, 100KHZ, 8mA DC BIAS
- 3.0 LEAKAGE INDUCTANCE: P2~P3 (WITH J1 AND J2 SHORT) : 0.35uH MAX @1MHZ
P4~P5 (WITH J3 AND J6 SHORT) : 0.35uH MAX @1MHZ
- 4.0 INTERWINDING CAPACITANCE: (P2~P3) : (J1~J2) : 35pF MAX @ 1MHZ
(P4~P5) : (J3~J6) : 35pF MAX @ 1MHZ
- 5.0 DC RESISTANCE: (J1~J2) : (J3~J6) : 1.2 OHMS MAX
- 6.0 RETURN LOSS: 1MHZ TO 30MHZ : -18dB MIN
30MHZ TO 60MHZ : -(18-20log(f/30))dB MIN (WHERE f IS IN MHZ)
60MHZ TO 80MHZ : -12dB MIN
- 7.0 DIELECTRIC WITHSTAND: (P2~P3) : (J1~J2) : 1500VAC OR 2250VDC
(P4~P5) : (J3~J6) : 1500VAC OR 2250VDC
- 8.0 INSERTION LOSS: 100KHZ TO 100MHZ : -1.2dB MAX
- 9.0 CROSS TALK: 1MHZ TO 100MHZ : -35dB TYP
- 10.0 COMMON TO COMMON MODE ATTENUATION: 30MHZ TO 100MHZ : -30dB TYP

Dimensions in mm

Designed: 卢丽霞20110825

PART NO: CP-3B005M-003

Unless other wise
specified, Tolerance: ±0.25

Checked: 高佳力20110825

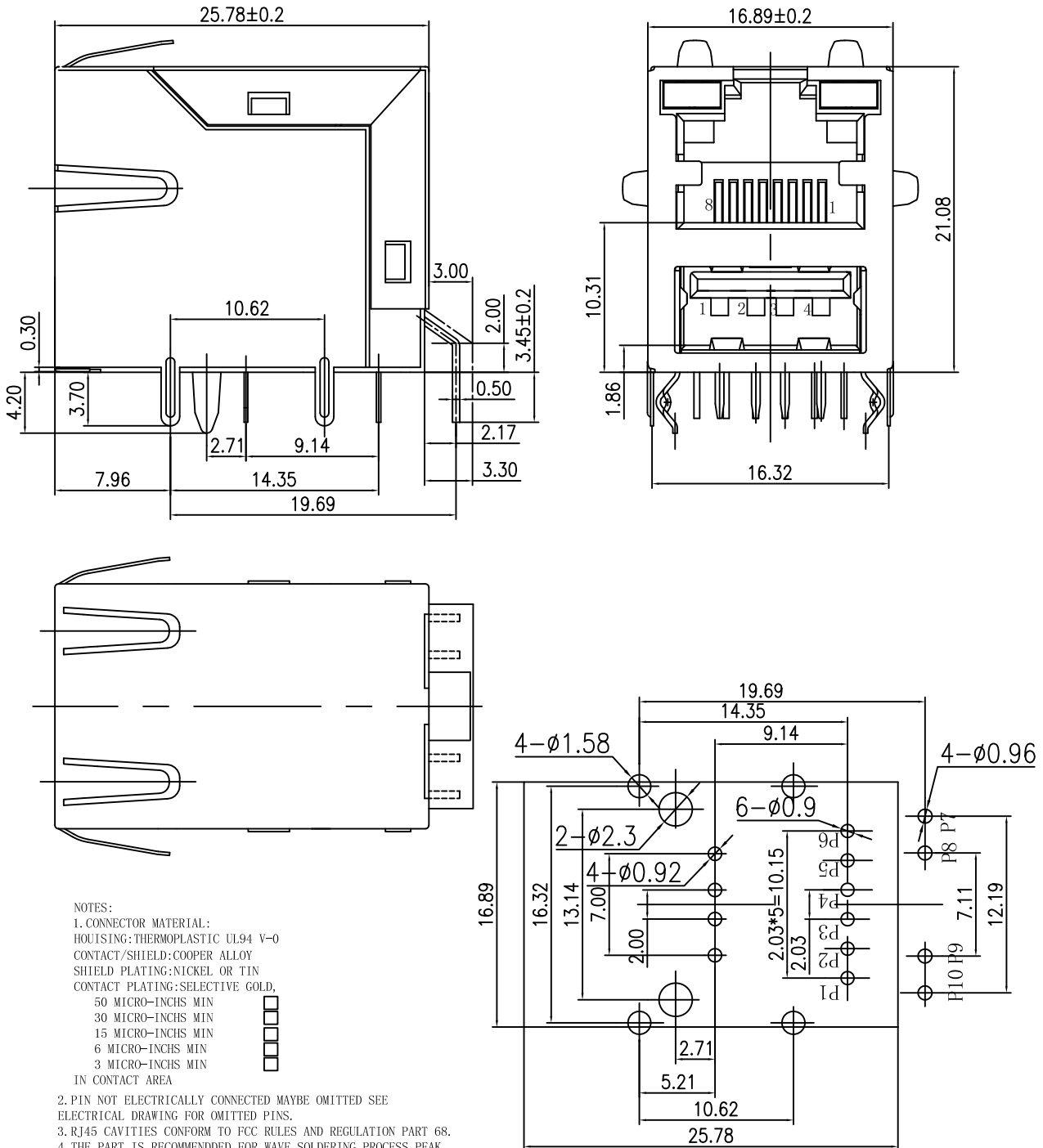
DWG NO: TC3016

Approved: 李俊洪20110825

REV: A

Page: 1/2

MECHANIC SPECIFICATIONS:



NOTES:

1. CONNECTOR MATERIAL:
 HOUSING: THERMOPLASTIC UL94 V-0
 CONTACT/SHIELD: COOPER ALLOY
 SHIELD PLATING: NICKEL OR TIN
 CONTACT PLATING: SELECTIVE GOLD,
 50 MICRO-INCHS MIN
 30 MICRO-INCHS MIN
 15 MICRO-INCHS MIN
 6 MICRO-INCHS MIN
 3 MICRO-INCHS MIN
 IN CONTACT AREA

2. PIN NOT ELECTRICALLY CONNECTED MAYBE OMITTED SEE ELECTRICAL DRAWING FOR OMITTED PINS.
 3. RJ45 CAVITIES CONFORM TO FCC RULES AND REGULATION PART 68.
 4. THE PART IS RECOMMENDED FOR WAVE SOLDERING PROCESS PEAK SOLDERING TEMPERATURE IS 260° C MAX, 10 SECS MAX
 5. OPERATING TEMPERATURE T=0° C TO +70° C.
 6. STORAGE TEMPERATURE T=-40° C TO +85° C.
 7. ALL TOLERANCES NOT OTHERWISE SPECIFIED TO BE ± 0.25 mm.

P. C. B RECOMMENDED HOLE LAYOUT SEEN FROM COMPONENT SIDE.

ALL CENTERLINE DIMENSIONS ARE BASIC

Dimensions in mm	Designed: 卢丽霞20110825	PART NO: CP-3B005M-003	
Unless other wise specified, Tolerance: ± 0.25	Checked: 高佳力20110825	DWG NO: TC3016	
	Approved: 李俊洪20110825	REV: A	Page: 2/2